

The Ahoooga News



JANUARY



2021



The official newsletter of Beaver Chapter Model A Ford Club of America, Portland, Oregon
Volume 59, Issue 1

BEAVER CHAPTER - MODEL A FORD CLUB - PORTLAND, OREGON

The Beaver Chapter is a non-profit organization dedicated to the restoration and preservation of the Model A Ford automobile. Membership is open to all people with a sincere interest. Members will be asked to volunteer a minimum of three hours annually to fill the club duty roster of the Portland Swap Meet.

The Beaver Chapter memberships commence on January 1st or on the date paid and expires on December 31st.

A \$5.00 late fee charged after January 1st for renewals.



New memberships received after July 1st are valid for the following year. Beaver Chapter dues are \$10.00 for a member plus \$1.00 for a spouse member. **Make check payable to Beaver Chapter, submit signed membership application to the Membership Coordinator at the meetings or send them to: Rayburn Mitchell at 23101 SE Firwood Rd. Sandy, OR 97055.**

By-laws Article III, Section 2 states: "Membership in the national club (MAFCA) shall be a prerequisite for all active members of the Beaver Chapter." MAFCA dues are \$50.00. Make check out to Model A Ford Club of America. Mail to: MAFCA, 250 S. Cypress Ave., La Habra, CA 90631.

CLUB OFFICERS FOR 2021

President: Lynn Sondenaa 503.781.9741

Vice President: Tom Winterrowd 503.263.2696

Secretary: Kirk Metteer 503.910.4900

Treasurer: Mike Worthington 503.788.5965

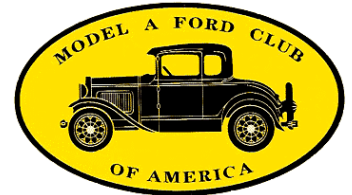
Member at Large: Debbie Dutton 503.706.4843

Editor: Jeanie Adair 503.655.3189

Membership Coordinator: Rayburn Mitchell 503.668.0872

Sargent at Arms: Rene Metteer 503.910.6805

Past President: Chris Irwin 503.538.5227



CLUB REPRESENTATIVES FOR 2019

NW Regional Group Reps: David Adair and Tom Winterrowd; Portland Swap Meet: Mike Worthington and Debbie Dutton; Historian: Lloyd Dilbeck; Sunshine: Brenda Caseday; Raffle Prizes: Lori Symank; Refreshments: Mary McConnell; MAFCA Chapter News: Tom Irwin; Beaver Chapter Webmaster: Richard Starkweather.

Web Site: <http://beaverchapterford.org/>

Articles and contributions for the newsletter is encouraged and will be used as space and time permits. **The deadline is the weekend following the meeting unless announced otherwise.** Correspondence should be sent directly to the Editor: jadadaja@msn.com or mailed to 895 Hazelwood Dr. Oregon City, OR 97045.

Other newsletters may reprint article as long as credit is given to the author and *The Ahooga News*.

Sledding is a life-long thrill,
you're never too old to start.
Sliding down the slightest hill
will keep you young at heart.



Yvonne Jeffords	3 rd
Nurry Scott	12 th
Arnold Jeffords	14 th
Beverly Asbahr	17 th
Bill Call	17 th
Dennis Schelske	23 rd
Rey Reece	25 th
Michael Blick	29 th
Dave Gallant	30 th
Mary Corah	31 st

Congratulations to Richard Starkweather!

MAFCA has awarded Richard the MAFCA Website of Distinction Award for 2020.

Richard spent many hours creating Beaver Chapters new website. Check it out if you haven't seen it. The address is **beaverchapterford.org**

And remember that you can find the newsletters there if you need to look back at past issues.



President's Column

As I write my January column, I have no good news on our ability to meet as a regular club. **There will be no January meeting at the Clackamas Community Center.** The Parks and Recreation District still have restrictions in place for the use of the facility. Hopefully this year we can gain some normality back into our life.

How about shout outs? Let me first start with Richard Starkweather who won the 2020 MAFCA Website of Distinction Award. That is a very hard award to win, so congratulations to Richard. All of his hard work on the web site has paid off! My second shout out goes to Tom Irwin who had the A of the Day photo for December 12th 2020. The photo was taken at Newberg's Christmas parade. Dan & Tani Brentano coupe was decorated in lights.

Good job on the photo Tom. My third shout out goes to Patty Sondenaa. Patty had her photo chosen as the front cover of The Restorer for Jan./Feb. 2021. That is a super hard feat to accomplish. Great job Patty and I might add that that is a real photo, no photoshop used here! The picture was taken at Trillium Lake in July on one of our solo tours in the Mt. Hood National Forest. ~ Lynn



I thought this was interesting how Ford's logos have changed.

1903-04

Emblem first used on Model C



1907

First use of an oval as a trademark



1928

Ford script in oval, first seen on Model A

1965
Ford Oval established as corporate signature



Ford Motor Company

2000

Trustmark established as corporate signature

2003
Dimensional oval created to represent the company and the brand



The Nuts and Bolts of it all -

Nuts and bolts are the cheapest of any part you can buy for your car. They are available from many sources. So why would you reuse one with rounded corners, rust, stretched or stripped threads? The failure of a fastener in a critical location could cause damage to a component, your vehicle or you. Never fasten new bolts with old nuts. Hardware that is rusted or stretched have mechanical properties that are compromised. Purchase high strength hardware as insurance. Holes that are elongated for alignment should be bridged with a flat washer.

Grade 0, soft steel bolts should not be used for drive train or suspension parts. Grade 5, 120,000 psi, will have three radial lines on the head. Allen head socket type screws are rated at 180,000 psi. Borrowed from *The Script* newsletter

Have you taken a break from you cell phone lately?

Your mobile phone has more computing power that the computers used for the Apollo II moon landing.

In 1983, the first mobile phones went on sale in the U.S. at almost \$4,000 each.

Mobile phones have 18 times more bacteria than toilet handles.

Patience is not the ability to wait, but the ability to keep a good attitude while waiting.

USING THE CORRECT ALTERNATOR PULLEY

WINTER 2005 MODEL A TIMES

The standard alternator pulley is usually too large for use on the Model A. The alternator regulator will not kick in until higher rpm is reached. To provide higher rpm to the alternator, a smaller pulley is required. Most Model A Parts suppliers sell the 2-1/4" pulley for the alternator. The base of the 2-1/4" pulley is too wide (dimension W), causing misalignment of the alternator pulley with the water pump and crank pulleys. This will cause excessive wear on the belt, friction drag at alternator, and undue pressure on the water pump front bearing. The 2-1/2" pulley has a black anodized coating and dimension W measures 3/8" wide.

The correct pulley to use for belt alignment with the water pump and crank pulley is a 2-1/2" pulley. This pulley has a gold anodized coating and

dimension W is 3/32" wide. This pulls the belt in closer to the alternator, providing correct alignment with the other two pulleys. The 2-1/2" pulley can be ordered by part no. 24-7100 Pulley Kit, from: *Boyle Future Technology, 12325 Locksley Lane, AUBURN, CA 95602 ph. (530) 888-6290.*



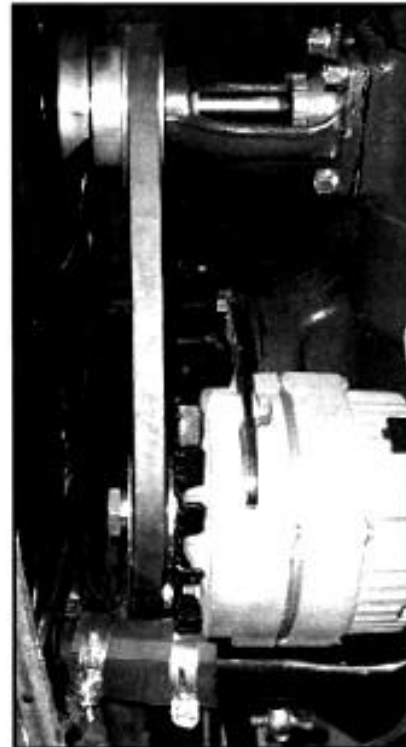
Incorrect Pulley
W = 3/8"



Correct Pulley
W = 3/32"



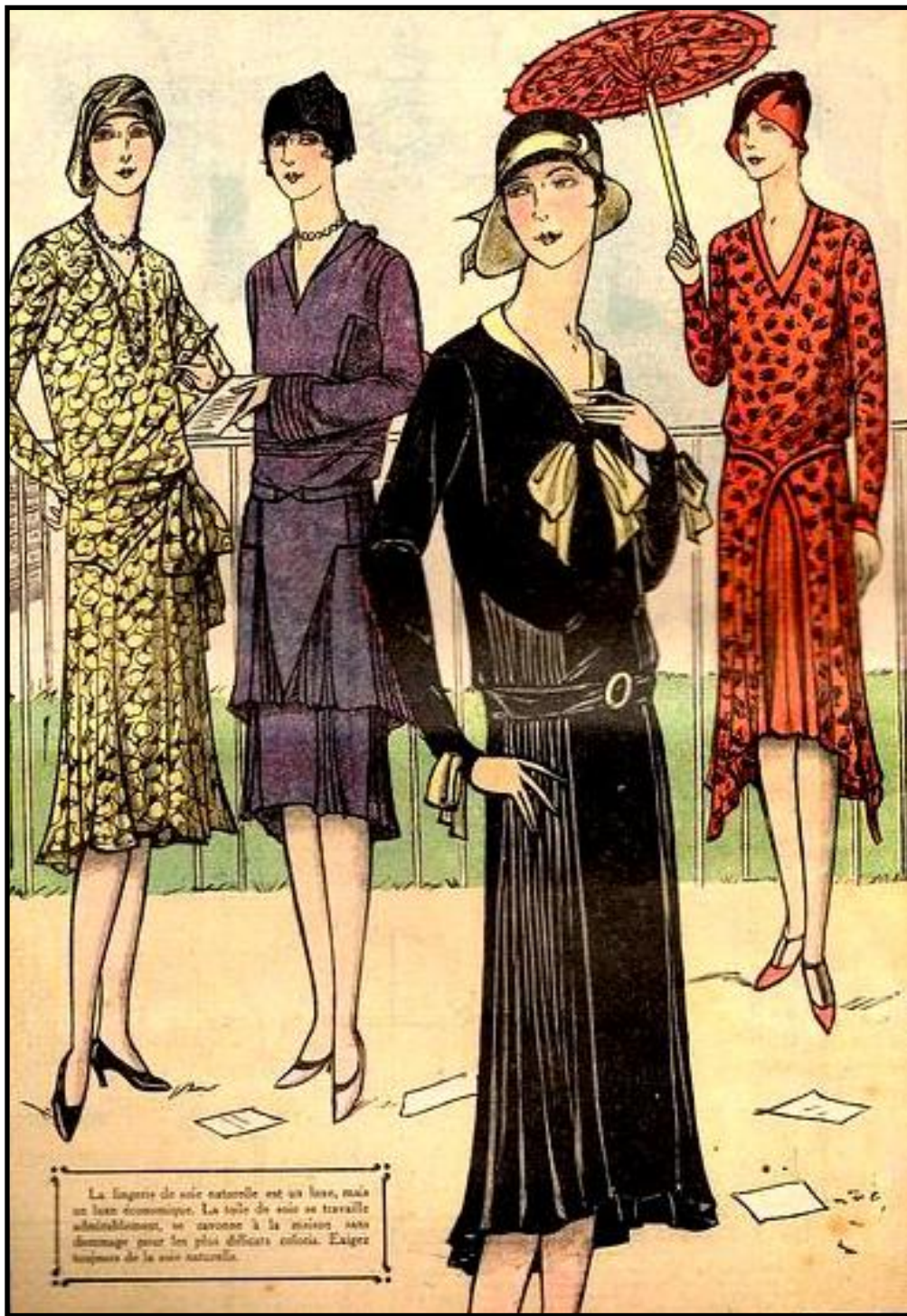
Incorrect Pulley



Correct Pulley

Tesla Automobile Assembly - We all know that Henry Ford invented the moving assembly line for the Model A Ford. But you will want to see this youtube video of Tesla's assembly line. Their factory is just east of Reno Nevada. It's amazing to watch, and note how few employees there are. There are few parts suppliers involved, but its built under one roof.

https://www.youtube.com/embed/8_lfxPI5ObM?rel=0



Pleats Are Everywhere In Ladies Era Fashions

This illustration of 1929 French fashions show the array of details on ladies dresses that were used during the Model A era.

The use of very narrow pleated panels were inserted into ladies dress designs in a variety of ways.

This is a good example of how diverse the fashion designers were. Study each dress to see what you can learn about our unique era fashions.

Beyond the pleats, note what kind of neckline is shown; where the waistline is placed] the length of the dresses; length of sleeves; are there belts and buckles or ties or bows. Also check out the hats and accessories. ~ Jeanie Adair

**Snowflakes big as buttons
are falling on my face.
Delicate and, oh so white,
like grandma's crocheted lace.**



Knock, Knock

Who's there?

Howie.

Howie who?

Howie gonna stay up till
midnight? I'm tired!



Are you having trouble
remembering what day it is?

Until further notice, the days
of the week are now called,
Thisday, Thatday, Otherday,
Someday, Yesterday, Today
and Nextday.

I'm not adding last year to my age, I didn't use it!

It's so cold outside, I just saw a teenage
with his pants pulled all the way up.

Its no longer 5 o'clock somewhere,
its 2020 everywhere,
so drink whenever you want.
(I know its 2021 but the pandemic continues!)



On New Year's Eve, Daniel was in no shape to drive, so he sensibly left his car in the parking lot and walked home. As he was wobbling along, he was stopped by a policeman. "What are you doing out here at four o'clock in the morning?" asked the policeman. "I'm on my way to a lecture." answered Roger. "And who on earth, in their right mind, is going to give a lecture at this time of night?" enquired the officer sarcastically. "My wife" slurred Daniel grimly.



My Two Cents By Mike Worthington

Why did you join the Beaver Chapter? Why do you renew your membership? We are after all a Model A Ford club, and surely the car is the reason a person would join the club. After looking at membership rolls going back to 2000, and posing these two questions to many members, I have made a couple of observations. Yes, the car is a major draw, but not the only reply I hear.

On average the club attracts about eleven new members per year. and almost all of these new members renew for a second year. This second year of membership seems to be a cross roads for many folks. About one third of new members leave the club after the second year. What causes a member to stay or walk away?

A club is a group of people with a common interest or goal. The Beaver Chapter fits this definition pretty well. When I ask the "why did you join" question, the car is the most frequent response. When I ask the "why do you stay" question the answers are much more varied. Most answers to this question fall into two general categories, people first, and activities second. Club activities are open to all members. You do not need to drive a Model A to go on a tour, and everyone is welcome to attend all social events. That leaves the people part of the answer. The people I am talking about is you. Members do not attend the monthly meeting to hear the treasurer report, or listen to the president step through the agenda. They attend to see, and visit with, their friends. This is great for long term members, but a problem for someone new to the group. A common comment that I hear from non-renewing members is that they did not attend activities, and did not know many members. We need to do a better job to help new members become part of the conversation.

The newsletter is helpful, but your personal involvement is critical. New members are unlikely to remember your name when you introduce yourself. They will however remember that you made the effort. Hi, my name is _____, we are glad that you have joined us this evening. Perhaps followed with a personal invitation to attend the next club event or tour. Greeting, and welcoming, new members should be everyone's job. The new member that we do not retain today could have been the club president tomorrow.

Thanks for reading. I joined the club because of the car, and stayed despite the meetings, so that I could attend the seminars.

Editors Note: Mike brings up some well thought out and very important points! Whether you are an "old member" or "new to the club" you all are an important part of Beaver Chapter. If you think of us as a puzzle, where do YOU fit in? The club functions better when each of us do our part. When we can start meeting again, be thinking about what you can contribute. ~ Jeanie, Editor



Christmas Past ...

Tom Irwin sent this photo of Dan Brentano's 1930 Coupe, Dan even dressed for the tour as Santa. Four Model A's toured Newberg's Christmas decorated homes. All the cars were decorated and lit up. Sounds like fun!



Snow Angels

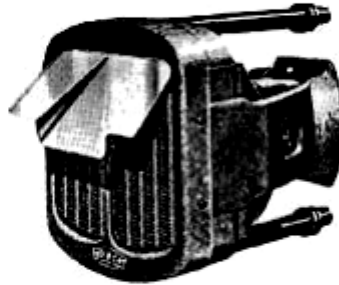
To make an angel print in snow, just lay down on your back. Flap your arms and legs like wings, now you've got the knack!



Red Cat Hot Water Heater

The Red Cat Hot Water Heater, made by the Red Cat factory, pioneer makers of hot air heater, is now on the market. It is listed at \$19.50 for Fords. Its prominent features, as pointed out by the company, are: A powerful and silent motor, large radiator core for greater heating surface and quicker heating, an improved method of mounting that obviates strain.

The heater is mounted to the dash and its weight is carried by strong metal brackets. This leaves the core full-floating and prevents strain on the water tubing. To insure silent operation, the motor is cushioned to the motor mounting; and where the heater is fastened to the dash, felt gaskets are used on both sides of the dash. The radiator, pure copper, is of new design, with elliptical water passages.



The heater is equipped with airplane-type fan blades, two-speed switch and new-type adjustable heat deflector. The finish is black "crackle," which harmonizes with any color scheme. The deflector is chromium plated.

Dealers may get a sample Red Cat Hot Water Heater at one-half list price by sending coupon from the G.A. Roth Mfg. Company's Red Cat advertisement in *Ford Dealer & Service Field*.

Ford Dealer & Service Field, July 1931

And here is another example of a different car heater.

DIRECTOR *Special* HEATER

A DUPLEX HEATER

DEVELOPS A QUICK AND LARGE VOLUME OF HEAT

REMOVABLE
PLATE FOR EASY ACCESS TO
CONDENSER OR DISTRIBUTOR

TWO INTAKE
ONE OUTLET

MANUFACTURED BY
METAL PRODUCTS CO.
AUTOMOBILE APPLIANCES

The LATEST DEVELOPMENT in
REMOVABLE MANIFOLD TYPE HEATER
TWO HEATERS CAST ALL IN ONE

The Director Special Heater always supplies a sufficient volume of heated air while working still or in motion.

Each heater is tested to 40 lb. pressure before leaving the factory.

Get well acquainted to factory specifications to replace the regular Ford Heater.

There are no fine or delicate parts inside the manifold to increase the temperature in the heater, which cause back pressure, freeze joints, expand valves or overheat the engine.

Built for solid or removable side chassis. Generates a large volume of heat quickly.

No accessories to speed car or slow a slow driver to get plenty of heat.

Larger volume than best-known type.

Sold by dealerships throughout the United States and Canada.

Not sold in China, Manchuria or Coo-Bee-Tee.

Manufactured by the Metal Products Co. for "A" and "B" Fords.

The New

Red Cat HOT WATER HEATER

**"A" Fords
\$19.50
All Others
\$21.00**

For Quicker, Bigger-Volume Heat!

An amazing new quick-acting hot water heater. Far superior for purer, bigger-volume heat. Priced sensationally low to catch VOLUME business. A regular gold-mine for dealers. A heater that will double your heater profits. A heater that will sell fast because it is the greatest hot water heater value ever offered to the trade!

Many Selling Points

Larger, better-built radiator core. Attractive black-crackle finish. Chromium heat deflector—newly designed to give 100% heat control. Airplane type fan blades. Powerfully built, quiet-running motor. 2-speed switch. New method of mounting insures full floating core. Thermostat furnished at slight extra cost: Ford and Chevrolet \$1.50; others \$2.50.

Sample—1/2 List

Send coupon below for sample Red Cat HOT WATER HEATER for your car. See for yourself what an amazing heater Red Cat has built. Enclose check.

SEND COUPON AT ONCE

Funny Quarantine Jokes

Ran out of toilet paper and started using lettuce leaves.

Today was just the tip of the iceberg.

Yesterday I ran out of soap and body wash.

Then it Dawned on me...

I could use dish detergent.

I never thought the comment

"I wouldn't touch it with a six foot pole." would become a national policy, but here we are!

Common sense is like deodorant. The people that need it the most never use it.

What a load of A's



Isn't Christmas wonderful especially when St. Nick brings you a Model A book. In this case the book is the Model A & AA Ford Paint & Finish Guide 4th edition. When you look at the MAFCA website you will notice this is advertised as the Product of the Month. The verbiage is exactly the same as the 3rd edition but the new guide has larger type much better color pictures and an expanded section on pin stripping to illustrate more commercial bodies.

Best of all there are 81 paint color samples 2 1/2" x 7 3/8" in alphabetical order. The 3rd edition and prior editions has small color chips 5/8" x 1" in some funny random order. That made it difficult to find a particular color and almost impossible to match once you found what your are looking for. The new booklet will be a real boon to matching a color for your car. I think this is a worthwhile book to add to your library.
~ DCA

May you always have love to share,
health to spare,
and friends that care.



The toilet paper crisis
The global pandemic
The hand sanitizer
The quarantine
The curbside pick up
The social distancing
The work from home
The travel ban
The wearing of masks
The online shopping
 (Ok, that last one was not so bad)

A blonde was driving a car and became lost in a snowstorm.

She didn't panic however, because she remembered what her dad had once told her. "If you ever get stuck in a snowstorm, just wait for a snow plow to come by and follow it."

Sure enough, pretty soon a snow plow came by and she started to follow it.

She followed the plow for about forty-five minutes. Finally the driver of the truck got out and asked her what she was doing.

And she explained that her dad had told her if she ever got stuck in a snow storm to follow the plow.

"Well, I'm done with the Wal-Mart parking lot, do you want to follow me to Best Buy now?"