

The Ahoooga News



2020



The official newsletter of the Beaver Chapter Model A Ford Club of America, Portland Oregon
Volume 58, Issue 2

BEAVER CHAPTER MAFCA PORTLAND, OREGON

The Beaver Chapter is a non-profit organization dedicated to the restoration and preservation of the Model A Ford automobile. Membership is open to all people with a sincere interest. Members will be asked to volunteer a minimum of three hours annually to fill the club duty roster of the Portland Swap Meet.

The Beaver Chapter memberships commence on January 1st or on the date paid and expires on December 31st. A \$5.00 late fee charged after January 1st for renewals.



New memberships received after July 1st are valid for the following year. Beaver Chapter dues are \$10.00 for a member plus \$1.00 for a spouse member.

Make check payable to Beaver Chapter, submit signed membership application to the Membership Coordinator at the meetings or send them to:

Rayburn Mitchell at 23101 SE Firwood Rd. Sandy, OR 97055.

By-laws Article III, Section 2 states: "Membership in the national club (MAFCA) shall be a prerequisite for all active members of the Beaver Chapter."

MAFCA dues are \$50.00. Mail to: MAFCA, 250 S. Cypress Ave., La Habra, CA 90631.

CLUB OFFICERS FOR 2020

President: Lynn Sondenaa 503.781.9741

Vice President: Tom Winterrowd 503.263.2696

Secretary: Kirk Metteer 503.910.4900

Treasurer: Mike Worthington 503.788.5965

Member at Large: Debbie Dutton 503.706.4843

Editor: Jeanie Adair 503.655.3189

Membership Coordinator: Rayburn Mitchell 503.668.0872

Sargent at Arms: Rene Metteer 503.910.6805

Past President: Chris Irwin 503.538.5227



CLUB REPRESENTATIVES FOR 2019

NW Regional Group Reps: David Adair and Tom Winterrowd; Portland Swap Meet: Mike Worthington and Debbie Dutton; Historian: Lloyd Dilbeck; Sunshine: Brenda Caseday; Raffle Prizes: Lori Symank; Refreshments: Mary McConnell; MAFCA Chapter News: Tom Irwin.

Articles and contributions for the newsletter is encouraged and will be used as space and time permits. **The deadline is the weekend following the meeting unless announced otherwise.** Correspondence should be sent directly to the Editor: jadadaja@msn.com or mailed to 895 Hazelwood Dr. Oregon City, OR 97045. Other newsletters may reprint article as long as credit is given to the author and *The Ahooga News*.

Beaver Chapter Web Site: <http://beaverchapter.shutterfly.com>

REFRESHMENTS

It was a sad state of affairs that the club had no refreshments at the January meeting! Beaver Chapter is a volunteer organization - there is a "u" in volunteer. What are **yo"u"** contributing to the club this year?

February Refreshment Hosts - Kirk & Rene Metteer



President's Column

I would like to take a moment and introduce you to the first lady, Patty Sondenaa. She grew up in Portland, Oregon and attended Oregon State University where she was an honor student in math & science. When I dated her I had a 1930 closed cab pickup. In the late 70's she drove a 1929 roadster to work from Sandy, OR to NW 15th & Flanders in Portland. She loves to garden, especially tending to her flowers. She has many talents like making stained glass and installing the tile floors and counter tops in our house. I



attribute my success to her. She helps me with my English, spelling, and grammar. She is patient and understanding.

I will close this column with my shout outs! David Adair had a fine technical tip in The Restorer magazine on making a distributor cam wrench. Lori Symank set up the Polar Express Christmas Potluck which was a huge success. Great job, Lori! Will you please head the 2020 potluck? Our hats go off to Pat Fiedler who had the daunting task of organizing the 2020 banquet. She and her team put in hours and hours of work for a wonderful experience! Now there are some of you that had checks written by our new Treasure, Mike Worthington. This would have never happened if he did not make at least five trips to Hillsboro to get the funds and checking account ready for use. He too, is a star! Show your support to him by signing up for duty at the Portland Swap Meet. Without the swap meet there would not be a name tag drawing, membership drawing, or tire ticket drawing. These funds keep our club alive so please sign up and help the cause. Thank you, Board and members! ~ Lynn Sondenaa, President

Battery Care By Lynn Sondenaa

The first part of battery care is to regularly give visual inspections. Check for corrosion on the terminals, water level, and cracks in the case. At this time also check for loose cables and terminals. Look at both ends of the cables. Be sure to check that the battery hold down clamps are snug. Also check the ground clamp frame bolt connection, as these tend to corrode away. I would recommend using a copper nut and bolt or a stainless steel nut and bolt to insure a good ground for many years.

If any of the battery parts have corrosion use a mixture of baking soda and water. Apply to the area; let it set for a few minutes then clean with a wire brush. Rinse the area with clean fresh water. When dry, the area can be treated with commercial products or petroleum jelly, (Vaseline). The two common commercial products are "Ignition spray" which is a clear coat made from Toluol. It does not last very long. A better product which will last for a year is "Battery Protector & Sealer" made by Permatex. Its main ingredients are petroleum distillates, ethylbenzene, xylene, and acetone. Avoid overspray as it will eat into paint. You can also purchase chemically treated red & green felt rings which help prevent corrosion. They fit around each battery post.

When checking the water level, do not overfill. Use only distilled water as tap water will add minerals to the electrolyte. This causes the lead plates to develop a chemical build up. This build up effects the battery's performance which reduces the voltage produced.

Brake Light Switch!

by Tom Endy

The Model A Ford has somewhat of a peculiar wiring system design. Power for the headlights, taillights, cowl lights, and brake lights is obtained from the connection at the cutout switch on the generator and routed to a buss connection inside the light bail at the bottom of the steering column.

The light switch on the steering column directs power to the headlights, taillights, and cowl lights, but not to the brake lights. A wire runs direct from the power buss inside the light bail to the external brake light switch.

There is really no purpose for the brake light circuit to be involved with the light bail. Should there be a short circuit in the light bail, the power lead to it can be disconnected temporarily from the cutout switch connection to accommodate operating the car without lights during daylight. Unfortunately, it also disconnects the brake light switch, which makes it unsafe to drive the car.

It would have been prudent if Ford had run a wire direct from the starter switch (or the fuse) to the brake light switch. With this arrangement the power lead to the light bail could be removed from the cutout switch on the generator without affecting the brake light circuit.

It is easy enough to modify the brake light circuit to isolate it from the light bail. Locate the wire on the brake light switch that comes from the light bail. Disconnect it at the brake light switch and fold it back and wrap insulating tape around it. Connect a new wire where the wire at the brake light switch was removed and run it direct to battery power. The most logical place to make the connection is at the starter switch. If a fuse modification is installed connect it there.

This wiring modification now eliminates the light bail from the stop light circuit. Should a short circuit occur in the light bail, it can be disconnected from power at the cutout switch connection and the car can be driven during daylight hours with the brake lights functional.

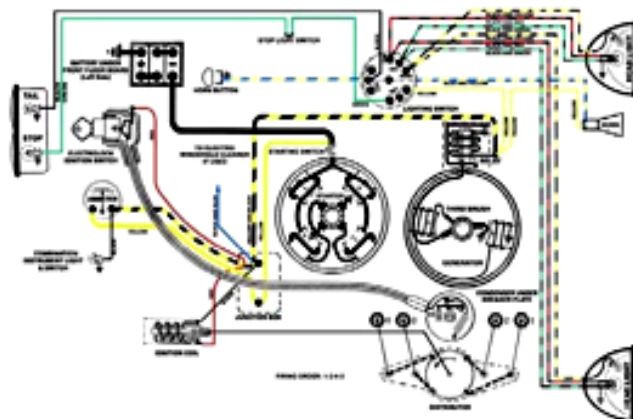


Fig. 18A. Wiring diagram showing the internal circuits of the model A Ford cars not equipped with cowl lamps, with two leads to each headlamp.
When starting to trace one of the several electrical circuits, begin with the positive (+) terminal of the battery or generator. The battery is the source of supply when the engine is not running, or generator is running very slowly. When the generator speed is increased to the point where its voltage becomes greater than the battery voltage, the voltage generated and then the generator is the source of electrical energy supply and also charges the battery. See DeSoutter's Automobile Encyclopedia, pages 102, 103 and 127 explaining the principle of operation of the constant cut-out switch, how to trace circuits, etc.

Model A Ford wiring diagram. Note second wire down from the top runs from the power buss inside the light bail to the brake light switch, then on to the brake light on the left.

Foreign made reproduction brake light switches are notorious for being of very poor quality and for shorting out. A good quality 1930-1931 brake light switch can be obtained from A&L Parts Specialties located at Canton Center, CT. The switch, which is a copy of the original, is a quality item manufactured by A&L. The switch includes brass bushings at each end of the operating shaft. ☺

A&L Parts Specialties

P.O. Box 301

Canton Center, CT 06019-0301 860-693-0112

anlel@aol.com

**CHANGE
IS INEVITABLE!**

The secret of change is to focus all of your energy, not on fighting the old, but on building the new.

WINTER 1929

This smart red dress features a lovely white collar, so simple but elegant. The top has a dropped waist that slightly gathers over the skirt.

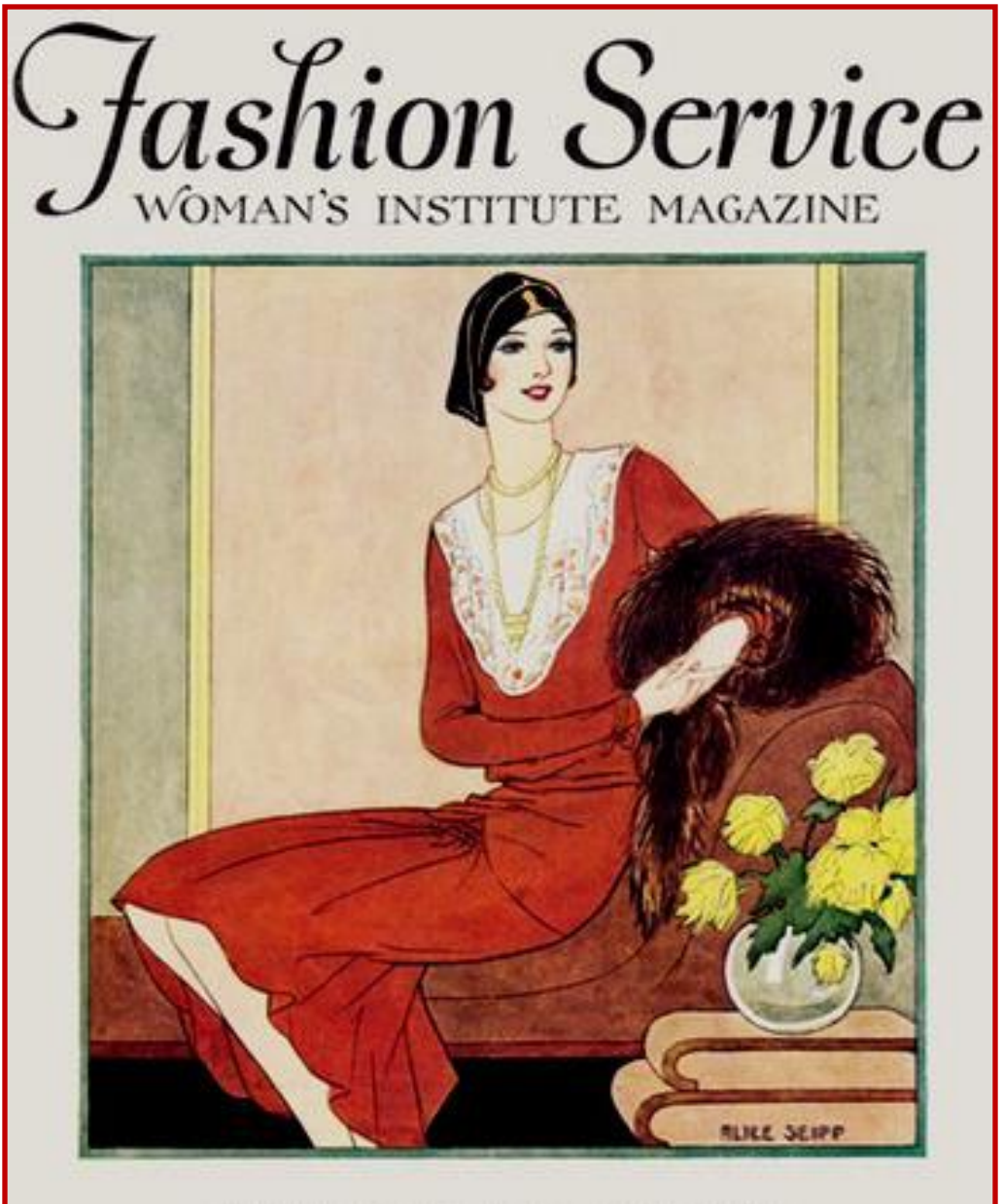
Long sleeves were so common during the Model A era. Only in warm summer areas of the country did you see sleeveless ladies dresses, and then there were usually some kind of cover up one would wear or carry for modesty.

The model has a fashionable one sided dropped hat with the brim turned up off the face in front.

She is carrying a fox fur and is wearing a long strand of beads that are looped around creating a long and a short version.

Fashion Service Woman's Institute Magazine was geared toward the home

seamstress. The magazine promoted all kinds of needlework projects to encourage women to learn how to sew and make beautiful things for their home and the latest fashions to wear. ~ Jeanie Adair



FOREVER & ALWAYS
SWEET
HUGS
LOVE
pe mine!! pe mine!!
FEBRUARY 14

New Years Resolutions - I don't do them - but one of the things I am doing this year is a "word of the day" site on my computer. The reason I bring this up is I'm going to vociferate, fulminate - in other words rant, expound, speak at length in a wild impassioned way!!

Quite often I look for Model A era fashions on the web. It's such a good resource to find things for the newsletter. But you do have to have some knowledge of what you're looking for. So many times a site will be titled "1920's" or "1930's". There is a lot of other years within these two decades. Well, as you know our era is only 1928-1931. The fashions prior to and after definitely are not the same as Model A era fashions. Beware - not all "era" fashions are what they should be for our era. I just get so frustrated when its all lumped together! Just one of my pet peeves. Ah, now I feel better... ~ Jeanie

Beaver Chapter Special Board Meeting January 8, 2020

Call to Order: 6:00 P.M.

President: Lynn Sondenaa called this meeting to discuss the "Orders of the Day". It was moved and seconded to proceed with "Orders of the Day" discussions.

Vice President: Tom Winterrowd presented tour planning and ideas for the upcoming year.

Past President: Chris Irwin discussed the Annual Banquet progress and proposed some possible ideas for future Annual Banquets.

President: Lynn Sondenaa presented 12 "Action Items" for Board Members to consider and get an early indication which items to possibly pursue. The 12 "Action Items" are:

- 1.) "Be Kind, Be Nice" - control cross-talk during meetings so business can be conducted.
- 2.) Research possible new meeting locations to see if a reasonable meeting place could be secured with better lighting, more parking, larger meeting room, etc.
- 3.) Newsletter: continue to be distributed electronically for free but printed newsletters be provided for a charge, since we are currently spending \$1200.00 per year on this one item. Also, stipulate that any newsletter advertised items list the price of the item.
- 4.) No breaks during the meetings.
- 5.) Review the potential of setting up a new format for the raffle.
- 6.) Banquet: A. Discussed all the effort some members go to organizing. B. Discussed concerns of meal deposits/payments not being recorded.
- 7.) Fourth of July Board Prepared Breakfast needs organized for 2020 year.
- 8.) Tire Ticket Drawing: proposed revising rules for winning.
- 9.) Photo Contest: proposed revising rules for winning.
- 10.) Past Presidents Tour: discussion tabled to research more fully.
- 11.) Bucket-of-Bolts issue was discussed.
- 12.) Method of providing information electronically was discussed. Research regarding the feasibility of creating and maintaining a website will be conducted.

Items 1, 4 and 7 will be considered for implementation in the 2020 year and most other items will be considered for possible implementation in the 2021 year.

Meeting Adjourned at 7:44 P.M.

Respectfully submitted,
Kirk Metteer, Secretary

Beaver Chapter Board Meeting January 15, 2020

Call to Order: 6:00 P.M. The November 2019, and January 8, 2020 Board Meeting Minutes were approved.

Old Business: Past President Chris Irwin presented Policy on eligibility for compensation for reimbursement of some member costs associated with participation in the Annual Past Presidents Tour, if members performed Swap Meet duty.

New Business Reports: Treasurer Mike Worthington reported that about half of the Swap Meet Duties have been filled. He also presented the 2020 budget. It was moved and seconded to accept the Budget as presented. A vote was taken. Motion passed.

Past President Chris Irwin updated the Board on progress of the Annual Banquet. 68 members are signed up to attend the banquet.

Vice President Tom Winterrowd informed the Board that the February Tour is a Bowling and Pizza Tour to begin at 11:00 A.M. at Kellogg Bowl in Milwaukie, Oregon, with a pizza feed following at 1:00 P.M. at Pietro's Pizza.

(Continued on next page...)

(Board minutes continues...)

Tom will circulate a clipboard at the General Meeting for members to sign up to plan and lead a tour. Months currently open are April, May, June, July, September and October. Tom has a list of possible tours but wants to give members the opportunity to come up with interesting tour ideas.

Membership Coordinator Rayburn Mitchell presented the 2020 Roster, just hot off the press.

Editor Jeanie Adair discussed charging to mail printed newsletters beginning in 2021. The Board will need to investigate issues concerning this change and approve the mailing costs.

President Lynn Sondenaa presented a list of action items to be acted upon:

1. Have the Beaver MAFCA dues been paid for 2020?
2. Has the meeting room rent been paid to Clackamas Community Center for 2020?
3. Was there a fee for the use of Bob's Red Mill conference room?
4. How is the club inventory reviewed?
5. Does the Board want to form a committee to propose changes to the banquet?
6. Volunteer positions needing filled:
 - a. Christmas Potluck
 - b. Beaver Babes
 - c. Website Coordinator

Keeper-of-the Tool Trailer, Ted Downs was present at the meeting and informed the Board that the Tool Trailer needs maintenance: Leak repair and cleaning at the least. No decisions made at this time.

Meeting Adjourned at 7:00 P.M.

Respectfully submitted, Kirk Metteer, Secretary

BEAVER CHAPTER TOOL TRAILER

Most Model A maintenance can be performed using common hand tools. Some tasks require special tools not always found in club member workshops. The club has purchased several of these specialty tools. Club tools are stored in a trailer controlled by Ted Downs and are available for checkout.

The following is the list of items that are available: Cherry picker (2-ton engine hoist), hinge pin puller, engine stand, Model A Ford service manual, 2-ton axle stands, 3-ton axle stands, 6-ton axle stands, rear axle seal driver, steel gas gauge puller, rear spring spreader, front spring spreader, front alignment tool, steering wheel puller, clutch tool, pinion puller, pinion nut wrench, engine head puller, ratchet nut wrench, carburetor flow tester, piston ring compressor, distributor shaft indicator, rear hub puller - K.R. Wilson type, rear brake centering tool, brake rivet tool, torque wrench, king pin reamer, and shift lever spring tool.

This current tool listing can be found on the Beaver Chapter website and in the club Resource Handbook. Contact Ted Downs for tool availability and check out information.

UPCOMING SEMINARS FOR 2020 - Guys, you won't want to miss some of the seminars that are lined up for this year. Lynn Sondenaa is planning one titled "How to Make your Model A Run Better". David Adair will show how to make a coil tester. Mike Worthington will discuss LED light-bulbs for Model A's. Would YOU like to conduct a seminar? Do you have any suggestions for what you would like to see a seminar on? Please talk to David Adair.

January 15, 2020 Beaver Chapter General Meeting

Call to order: President Lynn Sondenaa called the meeting to order at 7:25 P.M.

Flag salute: President Lynn Sondenaa led members in the flag salute.

Refreshments: No refreshments were available as no one had volunteered to provide them. Thanks to Ted Downs, beverages were available for members to enjoy.

New Business and Reports:

1. President Lynn Sondenaa explained the new meeting room layout and people flow pattern, which is intended to facilitate activities and reduce cross talk during meetings.

2. Lori Symank presented the items to be raffled.

3. Treasurer Mike Worthington updated the membership on Swap Meet preparations and presented the Swap Meet Duty sheets explaining how duties are identified according to mobility requirements. Mike said he will find a duty spot for any member wanting to do duty.

4. Treasurer Mike Worthington gave a complete accounting of club finances.

5. Vice President Tom Winterrowd informed the membership of the February 22 tour which begins at Kellogg Bowl at 11:00 AM, with a Pizza feed at Pietro's Pizza at 1:00 PM. Tom also explained his tour plans for the 2020 year and circulated a sheet for members to sign up to plan and lead a tour.

6. Lori and Stan Symank held the raffle drawing.

7. Past President Chris Irwin presented procedure for donations, gifts and charitable contributions. She also presented rules regarding compensation of motel room cost for attendees of the Past President's Tour, whom performed Swap Meet duties.

8. Pat Fiedler reported on progress of the January 18, 2020 Annual Banquet.

9. Editor Jeanie Adair reminded members that the due date for items to be included in the newsletter is the Sunday following the meeting. Please include prices of items for sale.

10. Membership Coordinator Rayburn Mitchell presented the 2020 Roster and reminded members to renew memberships. After March, memberships not renewed are dropped.

11. Sunshine Reporter Brenda Caseday reported that Pat and Jack Dusenberry both fell down and had to be hospitalized. Also, Barbara Henderson was in the hospital for 5 weeks and will have a long recovery.

12. David Adair reported that the November Shop Tour was well attended and enjoyed by all.

Tips and Leads: 1. Turlock, California Swap Meet is January 25 & 26.

2. MAFCA changed banks so checks need to be written to "Model A Ford Club of America".

Beaver Babes: A coordinator is needed for Ladies events.

Positions to be filled: President Lynn Sondenaa identified volunteer positions that need filled, and strongly encouraged members to step up.

Drawings: 1. Name Tag Drawing of \$25. was won by Lori Symank.

2. Red Ticket Tire Drawing: J Wyllie - \$600, Jeanie Adair - \$100 and Mike Worthington - \$50.

Meeting Adjourned at 8:25 P.M.

Respectfully submitted, Kirk Metteer, Secretary

"It is a never ending battle of making your cars better and also trying to be better yourself"
~ Dale Earnhardt

BEAVER CHAPTER BANQUET

The theme for the annual banquet was "Fly Me To The Moon". Decorations included moon and stars with bright spots of yellow flowers for centerpieces. It was a nice evening.

Past President Chris Irwin welcomed us, new President Lynn Sondenaa gave the invocations and dinner was served.

A wonderful slide show of 2019 activities was prepared by Lisa Mitchell, complete with music. Let's do that again next year Lisa!



Above is J Wyllie who presented the John Reuter Mileage award to Tom and Chris Irwin (again). Chris looked elegant in her era gown!

Visiting was a delight of the night - the banquet is a social event!

It was so good to see the Henderson's there after all of Barbara's hospital visits. Continue to gain strength!





The bar was a popular place...



Lynn McDonald announced the winner of the Photo Contest - Lori Symank won.

The past board members were recognized and thanked and the 2020 board members were introduced.

Music by The Fabulous Farelanes provided an opportunity for several members to kick up their heels.

Thank you to Pat Fiedler and her committee for coordinating the evening. Much thanks to each of you!



2020 Swap Meet Update

The 2020 Portland Swap Meet planning is progressing. This is a pretty big operation with many moving parts. The goal each year is to improve the experience for both customers and vendors. I would like to report that everything is on track, but we still have a couple of challenges. The planning process kicked off in September with the first of seven planning meetings. Early meetings generally deal with organizational items such as work assignments, sponsorships, and contracted services. January starts the real nuts-and-bolts process of dealing with all of the items required to support an event of this size. The list is surprisingly long – fences, tents, signs, buses, parking, sound system, medical, security... It's pretty interesting to see everything come together and it is not too late to be a part of the process.

2020 Swap Meeting duty sign-up sheets were available at our January general meeting and will be available at each meeting until the swap meet. If you cannot make it to the meeting give me a call and we will see what we can work out.

The Beaver Chapter is one of the six clubs that own the Portland Swap Meet LLC. That pretty much makes each of us stockholders. Standing a swap meet duty is a great way to ensure that your investment remains sound, and profitable. ~ Mike Worthington

Dear Club Members:

I have been the chair for the club banquet for 3 years and I wish to extend my gratitude to my wonderful committee and everyone who has attended. The attendance at the banquet has dropped from 4 years ago. I am assuming this is due to: 1) Some folks not wanting to drive at night; 2} Many of our active members spend their winters in the sunny states and are not in Oregon in January; 3) Weather conditions are questionable in January. If I am correct, would the membership consider changing the date of the banquet to May? Below is a questionnaire. Please return it to me via Fax 503-676-8021 or email: childsplaypat@aol.com, or mail it to: Pat Fiedler; PO Box 428; Sandy, OR 97055. Thanks for your time. May we enjoy many more great times at club events, tours and meetings.

BANQUET QUESTIONNAIRE

1. How long have you been a member of the club?
2. How many club banquets have you attended in the last 3 years?
3. Do you work at the swap meet? Yes No
4. Which month would you prefer having the banquet? (circle one) January May
5. Please rate the venue (Monarch hotel) – 5 being the best 1 2 3 4 5
6. Please rate the food choices. 1 2 3 4 5
7. Please rate the band 1 2 3 4 5
8. How important is the band and dancing to you? 1 2 3 4 5
9. Do you like the time frame 6:00-10:00? YES NO If no, which time would you prefer?
10. Comments and suggestions



FOR SALE:

1931 Model A Victoria. This car is complete and all done. It has a new '32 B engine with 400 miles on it. It has original bud vases and all three rear shades. I also have all the NOS parts for hydraulic brakes; I will include the brake package with the sale. This car really needs nothing. Asking \$26,000. Bob Hugo 360.580.5021 or hugopc@coastaccess.com

Sometimes things fall apart so that better things can fall together. ~Marilyn Monroe

♥ Fantabulous FEBRUARY FUN

CALENDAR OF EVENTS

PIZZA!



BOWLING TOUR - Join us for bowling and pizza on **Saturday, January 22nd at 11AM** at Kellogg Bowl located at 10306 SE Main St Milwaukie, OR. Followed by pizza at Pietro's right next door to the bowling alley. Sign up at the meeting or let Tom Winterrowd know you'll be there - 503.263.2696.



The new club roster is out! Please check your information to make sure it is correct. If it isn't please call Rayburn Mitchell, Membership Coordinator, to let him know 503.668.0872. The roster has a whole new look, pick yours up at the meeting if you haven't gotten one yet.

Phone numbers and email addresses change often these days and we want to keep current.

LADIES: Do you like to meet with other ladies for lunch, tea, museums, antique shopping, etc? If so, lets get some dates on the calendar and lets have some fun together. One member can't plan it all, so please come with some ideas for fun activities. See you at the meeting.



FOR SALE:

1930 Model A Pickup, runs, with title, very good sheet metal. Needs restoration but much has been done. \$5,500, including new wood. Bill Jabs 971.235.3804

WANTED:

1928-29 Front passenger fender, well preferred in very nice shape. Tim Brost 503.762.1735

Mystery Model A Part

Submit your guess at the club meeting. One guess per member. Put your name and your guess on the ticket.

First correct answer drawn will win a gift card.



Gary Dawson	2 nd
Rob Oxley	2 nd
August Lehto	4 th
Randy Selvester	7 th
Zackary Minick	9 th
Don Scheller	14 th
Bob Moore	15 th
Lisa Mitchell	15 th
Dave Metzger	15 th
Curtis Meade	16 th
Roy Farmer	17 th
Lynn Humble	18 th
Emily Mitchell	19 th
Ron Whitworth	20 th
Marlynne Pugsley	22 nd
Bill Henderson	23 rd
Linda Downs	27 th